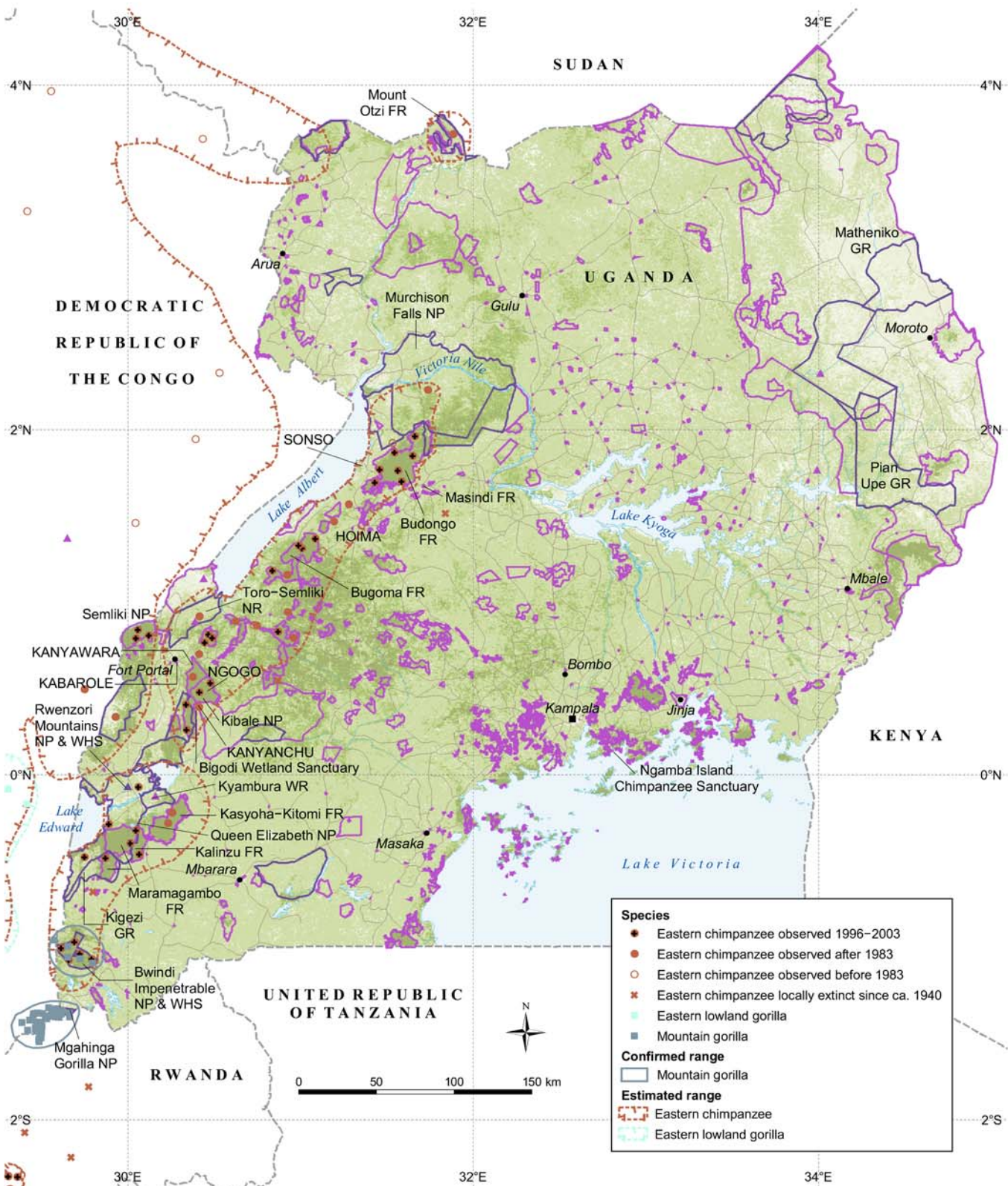


Great Ape Distribution in Uganda



Compiled by: M. Doughty, July 2004.
 Source: ESRI Data & Maps CO, UNEP-WCMC Database; Recent tree cover: University of Maryland (<http://modis.umiacs.umd.edu/vegetation.html>); Bugwezi (2001); Karpens et al (2003); Republic of Rwanda Ministry of Lands, Environment, Forestry, Water and Natural Resources (2004); Purnace (2003).

The contents of this map do not necessarily reflect the views or policies of UNEP-WCMC or contributing organizations. The designations employed and the presentation do not imply the endorsement of any opinion whatsoever on the part of UNEP-WCMC or contributing organizations concerning the legal status of any country, territory, city or area or its authority, or concerning the delimitation of its borders or boundaries.