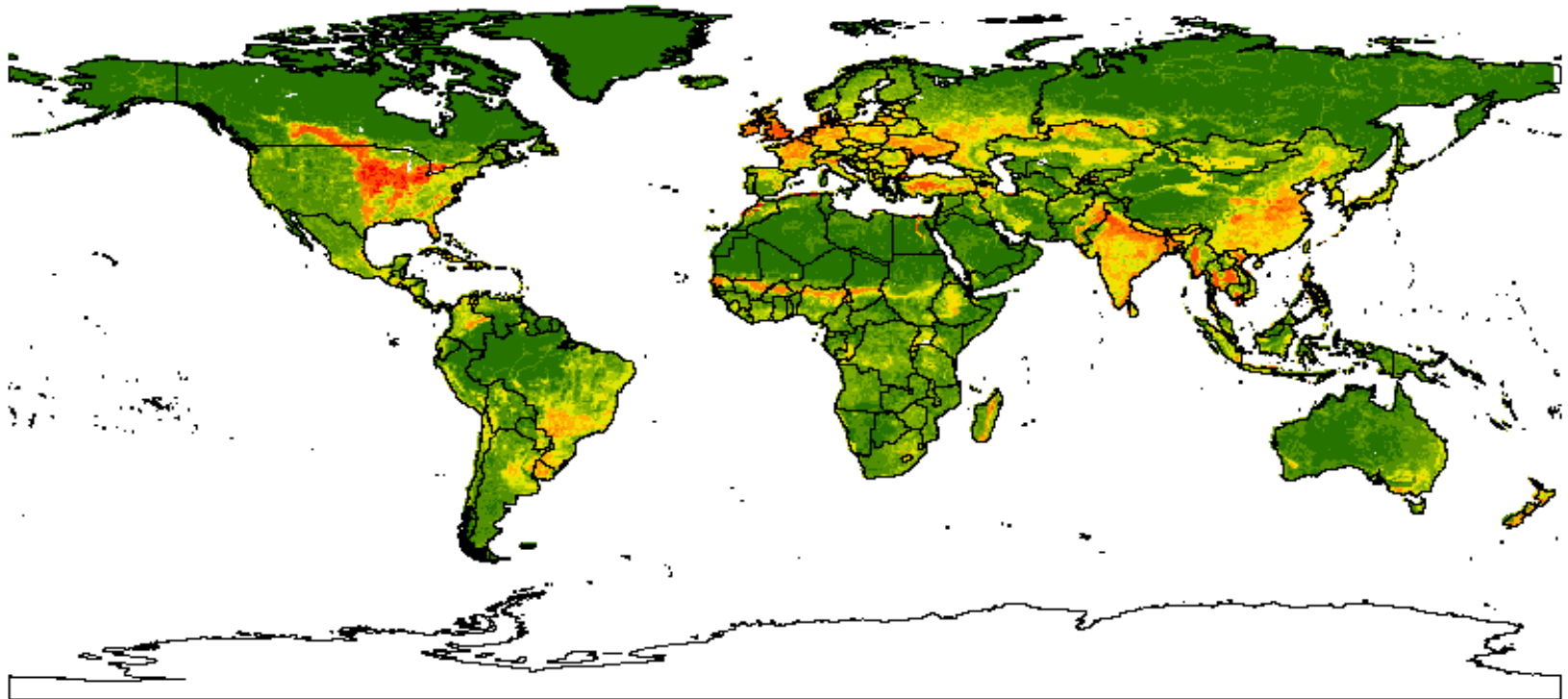




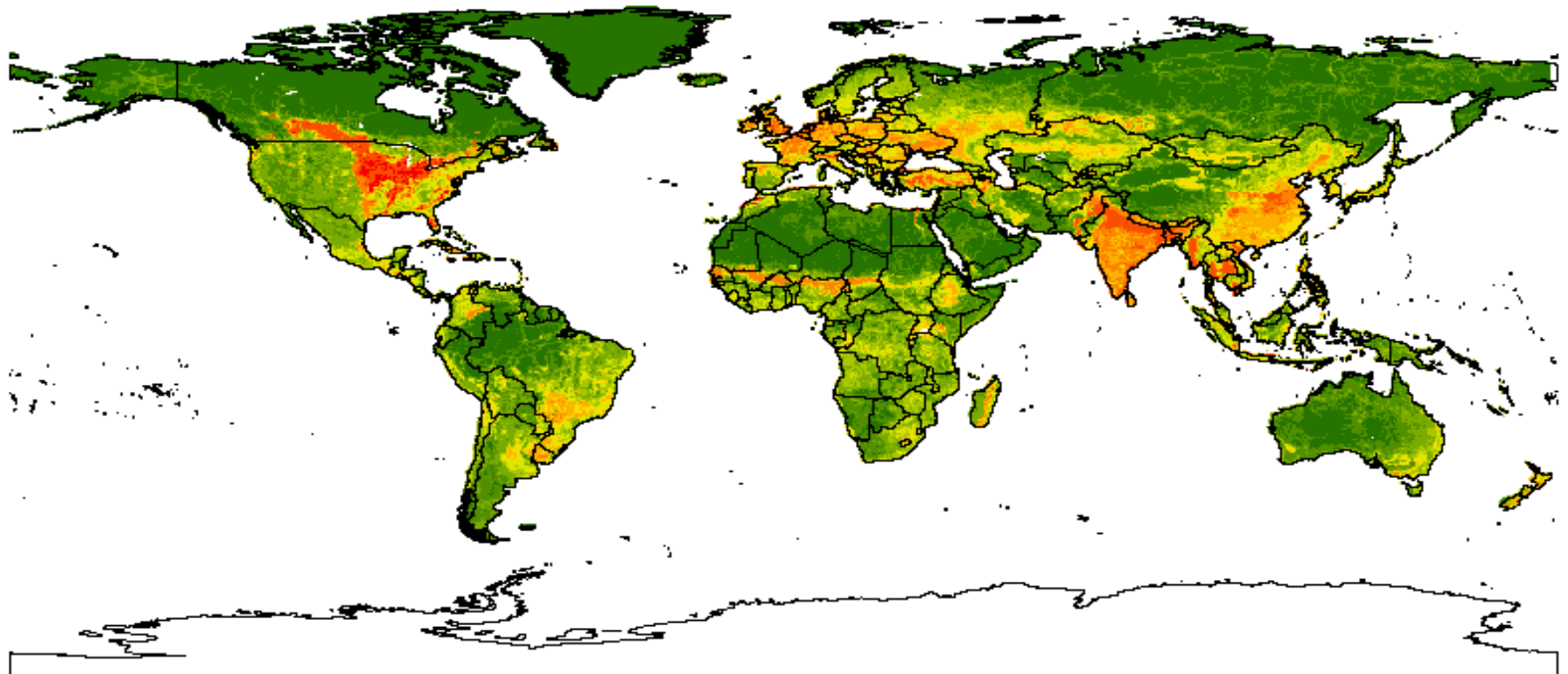
Forests and ABS : Issues and Perspectives

Balakrishna Pisupati, UNEP

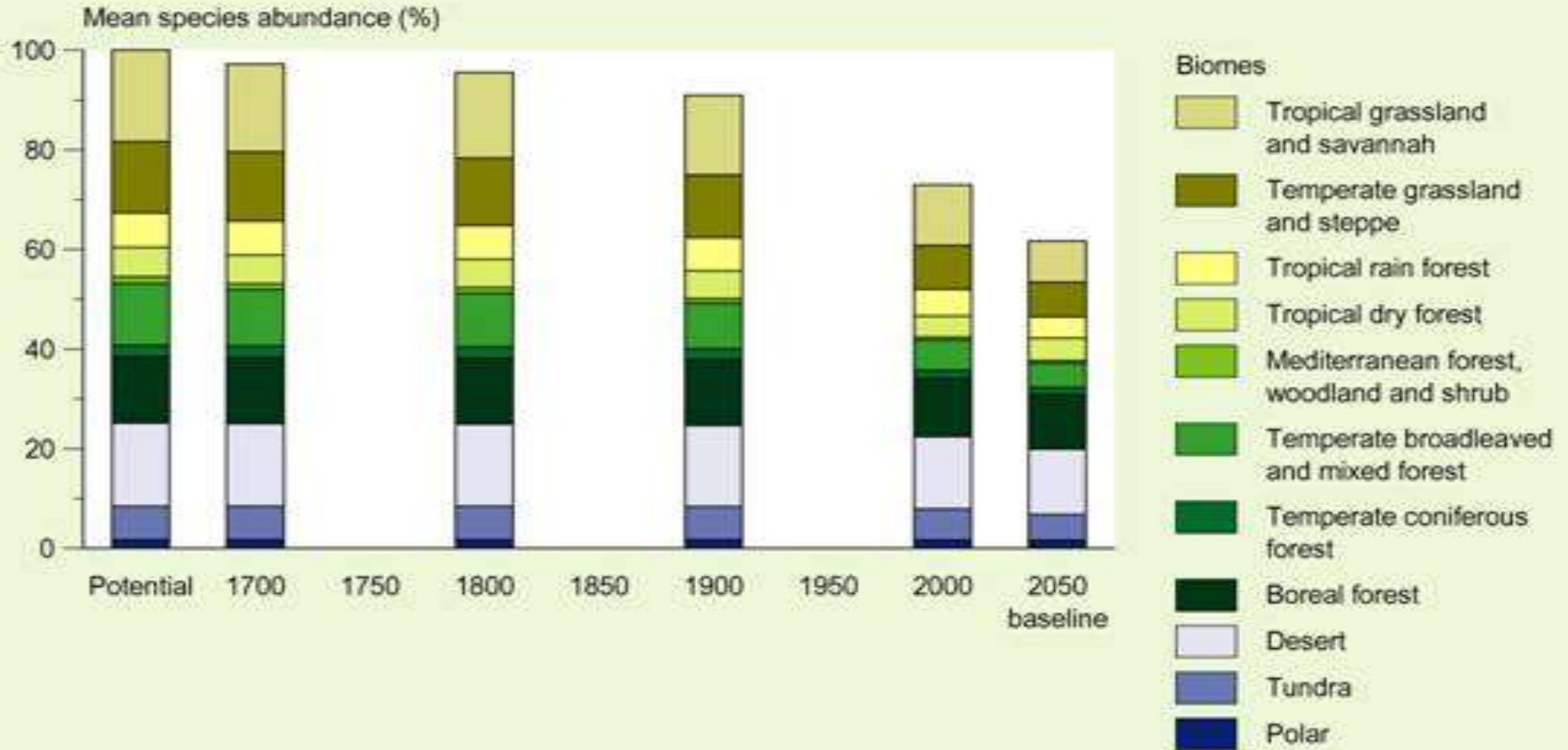
Biodiversity in 2000 – remaining Mean Species Abundance



Biodiversity in 2030



Historic and future development of global biodiversity



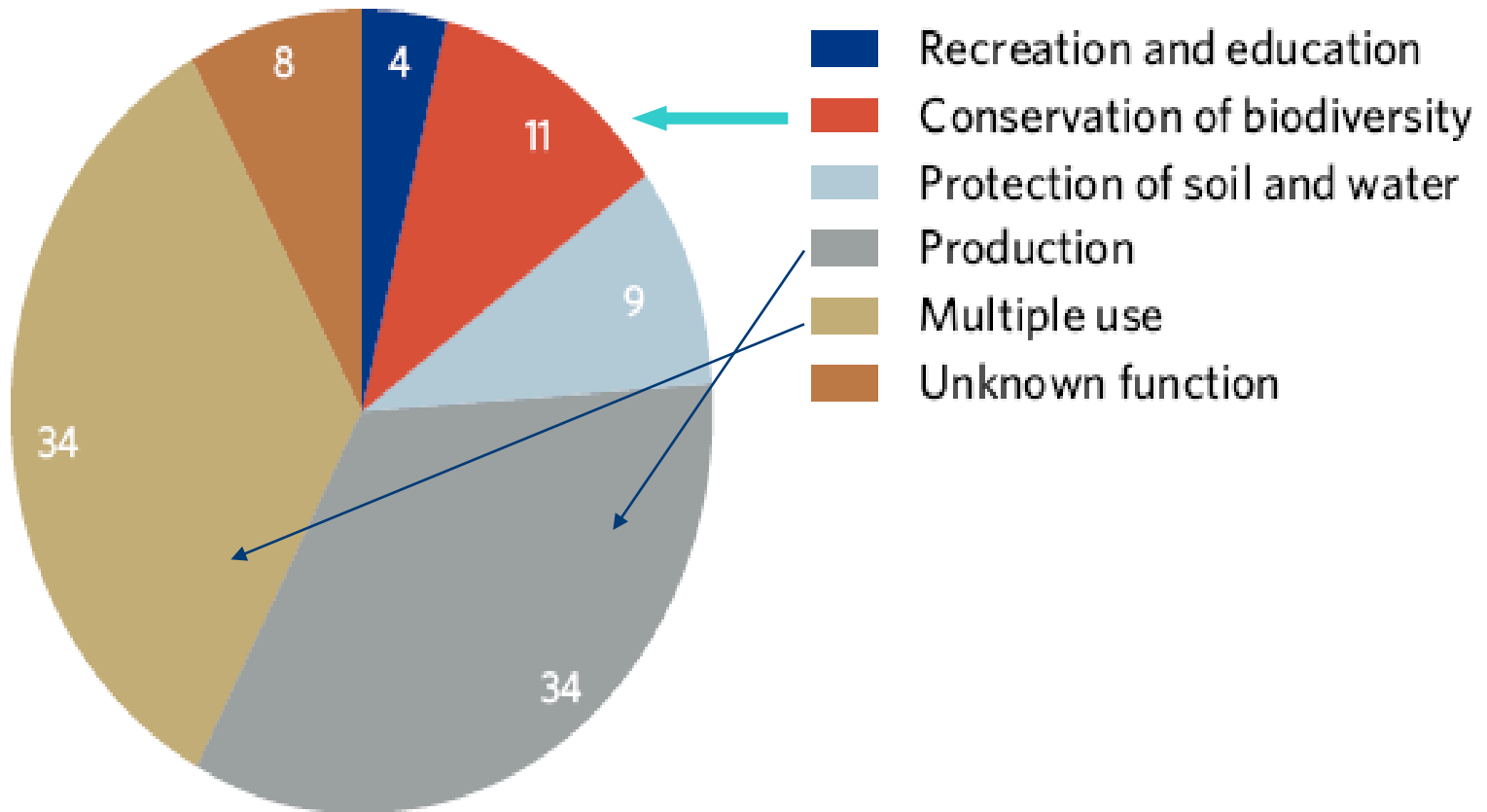
Global terrestrial biodiversity development by major biomes, from 1700 to 2050

COPI : MSA statistics indicate that in the “Policy Inaction” scenario :-

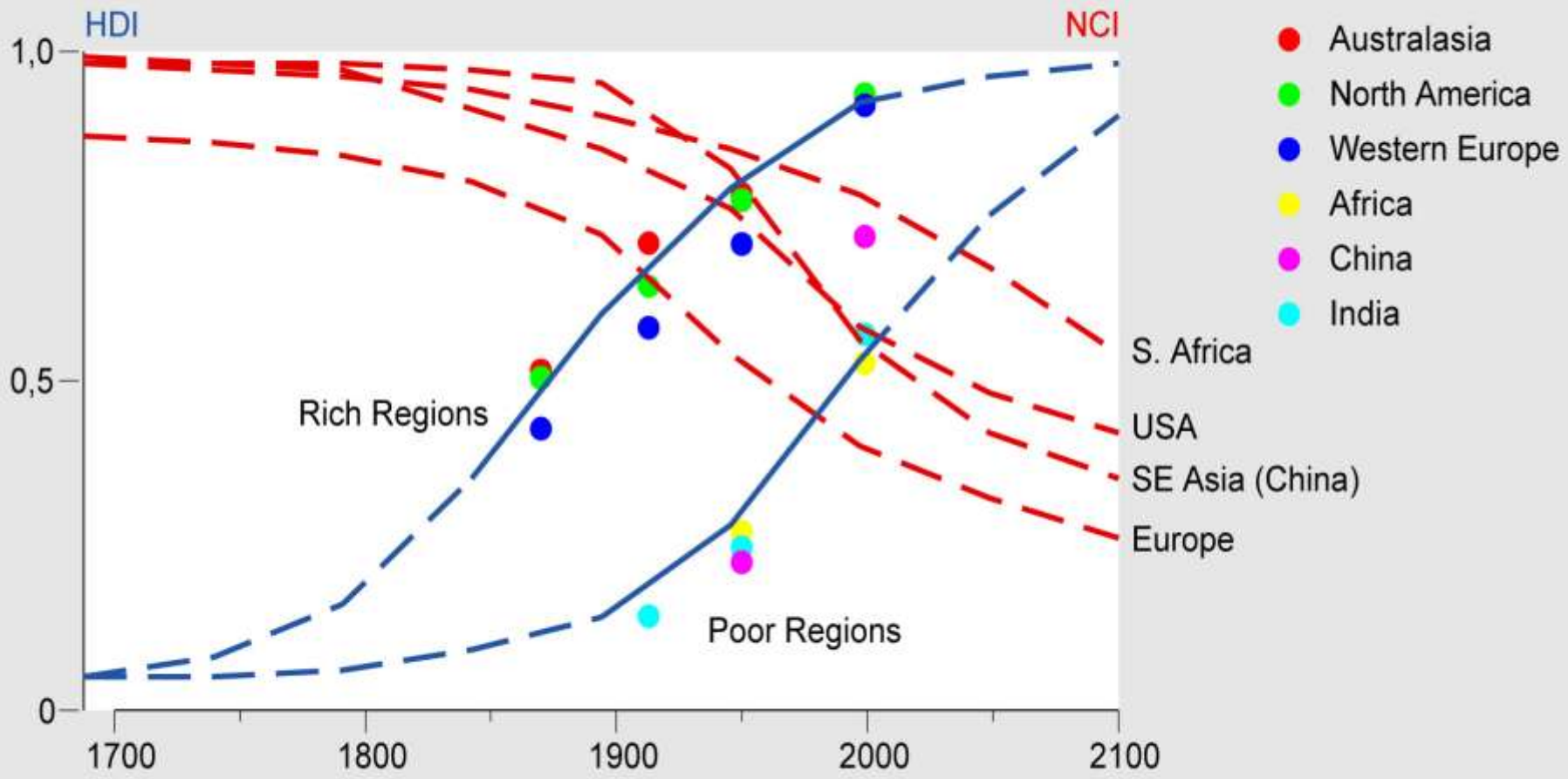
- Global objective (significant reduction in rate of loss) unlikely by 2050
- Stricter European goal (halting further loss) unlikely by 2050

Forests ...what are they used for?

Proportion of total forest area by designated function, 2005 (Percentage)



Human Development and Biodiversity – Inversely correlated ?



Forests and Economics

Biodiversity & Ecosystem Valuation
is *Three Challenges* Rolled into One

....

- ❖ Ecology
- ❖ Valuation
- ❖ Discounting

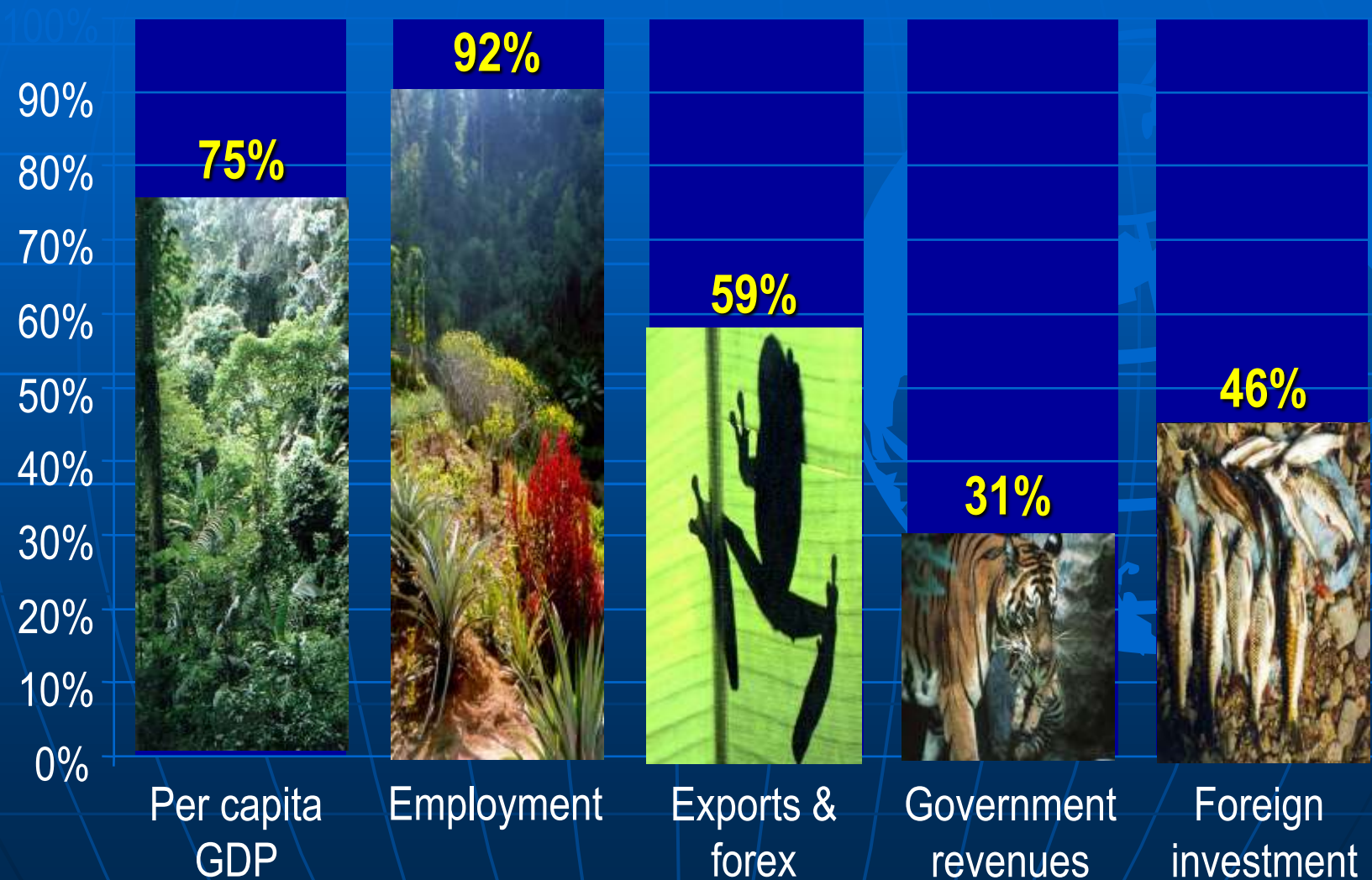
How “Big” is Conservation ?

Measures	Revenues (USD Bio)	Capital Employed (USD Bio)	People Employed
Sectors			
Automobiles ⁴	\$ 1,882 Bio	\$2,217 Bio	4.4 Mio
Steel ⁴	\$ 530 Bio	\$ 588 Bio	4.5 Mio
IT Services & Software ⁴	\$ 942 Bio	\$ 179 Bio	5.7 Mio
Protected Area Conservation	\$ 5,000 Bio ¹	\$ 125,000 Bio ²	1.5 Mio ³

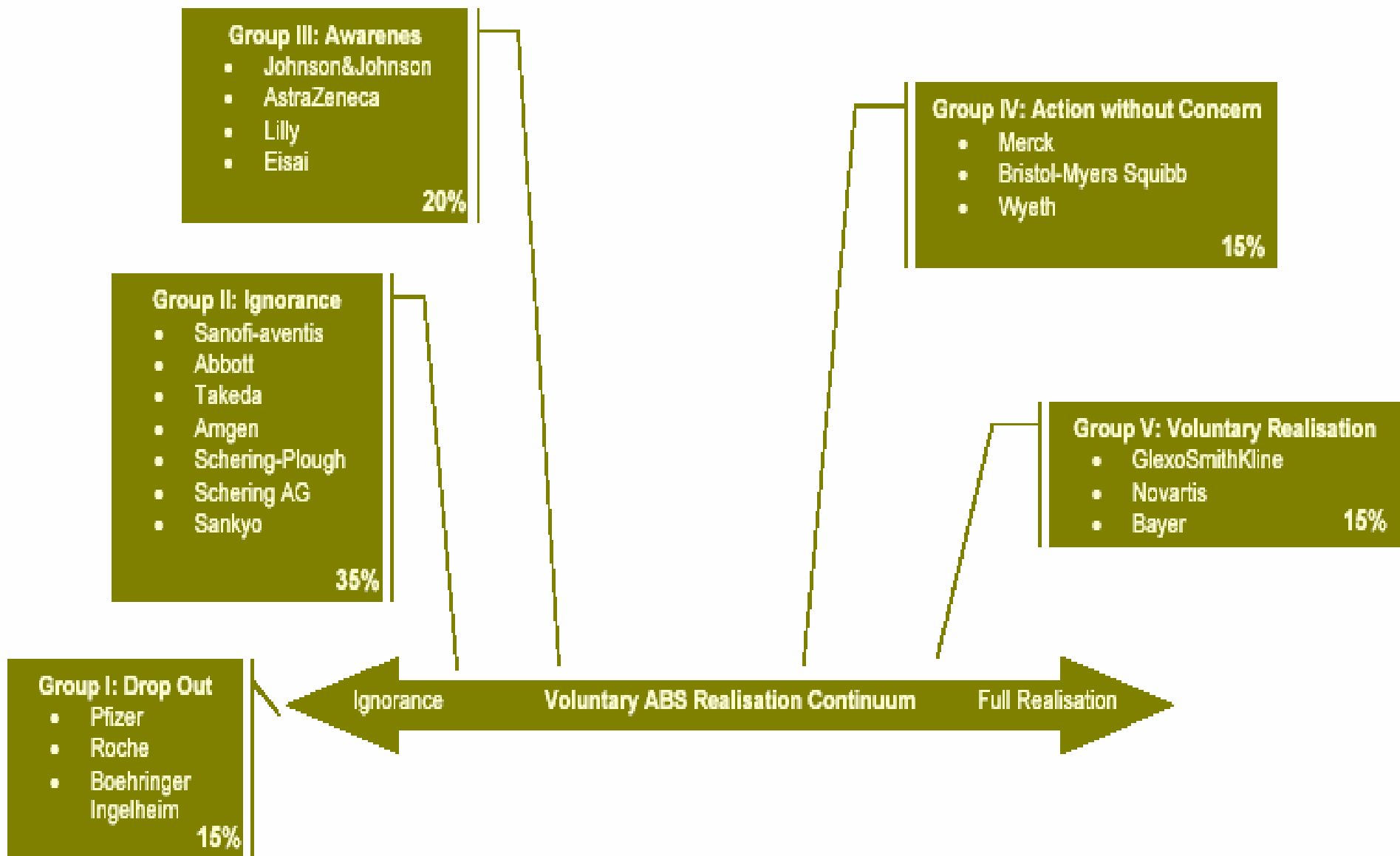
1. Balmford et al, 2002, “Economic Reasons for Conserving Wild Nature”, Science 297, estimates Protected Areas could produce goods and services valued at between \$ 4,400 billion - \$ 5,200 billion per annum
2. Natural Capital : Present Value (PV) of a constant service annuity of \$ 5,000 billion per annum, discounted @ 4% per annum
3. Estimate of the number employed directly in the maintenance, protection, and oversight of Protected Areas globally
4. Global Business Sector estimates from Global Markets Centre (“GMC”), Deutsche Bank

Value of Forests in National Economy – Lao PDR

(Source: IUCN, 2003)



ABS and Natural Product Research



Percentages relate to the reference parameter of 20 cases studied



Key Issues – Forests and ABS

Key Issues

- Nationalisation of Forests
- Tenurial Rights
- Recognition and Reward
- Joint Management
- Livelihood options
- Benefit Sharing
- Participation and Awareness

Public ownership dominates but
tenure patterns diverse

SFM, JFM and other models
exist but they do not consider
issue of ABS using the CBD
perspective!

Ownership of forested area

Region	1000ha	Private %	Public %	Other
Africa	552,326	1.8	97.6	0.6
Asia	566,388	5.0	94.4	0.6
Europe	998,071	10.0	89.9	0.1
N.C.America	698,285	29.9	66.2	3.9
Oceania	204,933	23.7	61.3	15.0
World	3,156,243	13.3	84.4	2.4



Issues that need attention....again

The need for ensuring communities benefits from SFM is well recognised but.. progress in implementation of actions weak

Consider SFM and related sharing of benefits as a process not something that needs to be 'achieved'

Could governance help?

Good governance is frequently cited as an option but rarely used for better management of forests and ensuring benefits are shared appropriately

Again...governance is a continuous process and should be a part of solution at all levels.

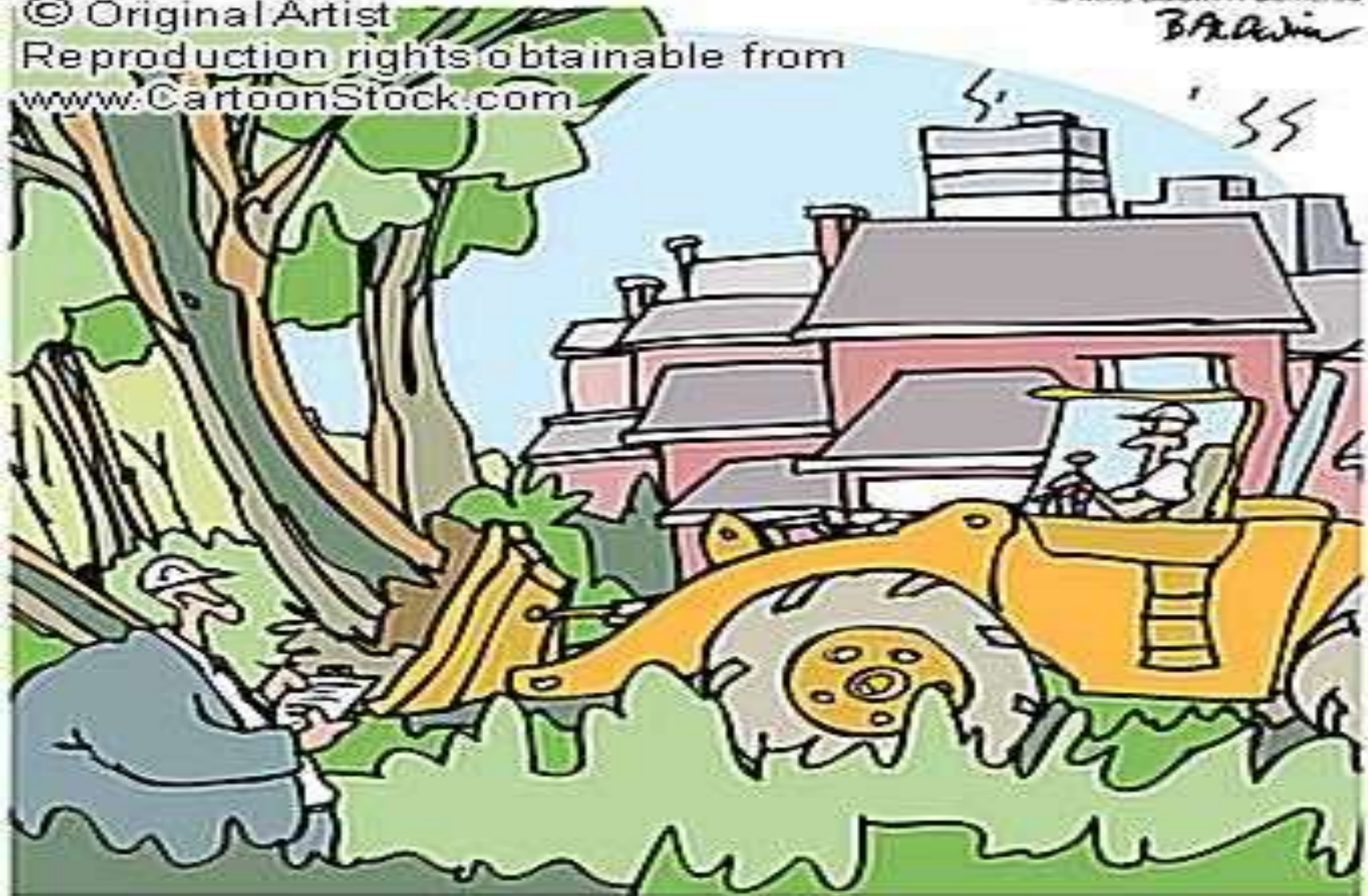
Outcomes of global consultation with ILCs on REDD

1. Develop a legal framework and consultation mechanisms for Indigenous Peoples based on Free Prior and Informed Consent, including consideration of customary laws, norms and practices.
2. Each REDD pilot country be required to report on the legal situation of Indigenous territories, lands and resources and rights of forest-dependent communities.
3. Promote sub-national processes and mechanisms that decentralize REDD, including planning, consultation, benefit sharing, etc.
4. Evaluate the legal situation of land tenure and recognition of indigenous territories before the implementation of REDD initiatives.

Should we look at 'models' and mainstream ABS?

- ✓ Ensure limited complication and confusion to governance structures – existing and anticipated
- ✓ Encourage community based approaches to ABS that feed into national and global dialogues and policies on ABS
- ✓ Suggest simplicity and inclusiveness in looking at mainstreaming

© Original Artist
Reproduction rights obtainable from
www.CartoonStock.com



It was hard to put a price on progress.
Real hard without a calculator.

Consider??

ABS in the context of Forests could more focus on national issues/priorities for action than global issues. However, global ABS issues are sure to influence how forest governance structures would change